



21150

SW 167th Ave
Miami, FL 33187



REDLAND WAREHOUSE WITH REFRIGERATED SPACE AVAILABLE FOR LEASE OR SALE

+/- 55,600 Sq. Ft. of Buildings

+/- 4.36 Acre Lot

Edison Vasquez, SIOR, CCIM

evasquez@comreal.com
305-401-1085

Ed Redlich, SIOR

eredlich@comreal.com
305-710-5593

Chris Spear, SIOR, CCIM

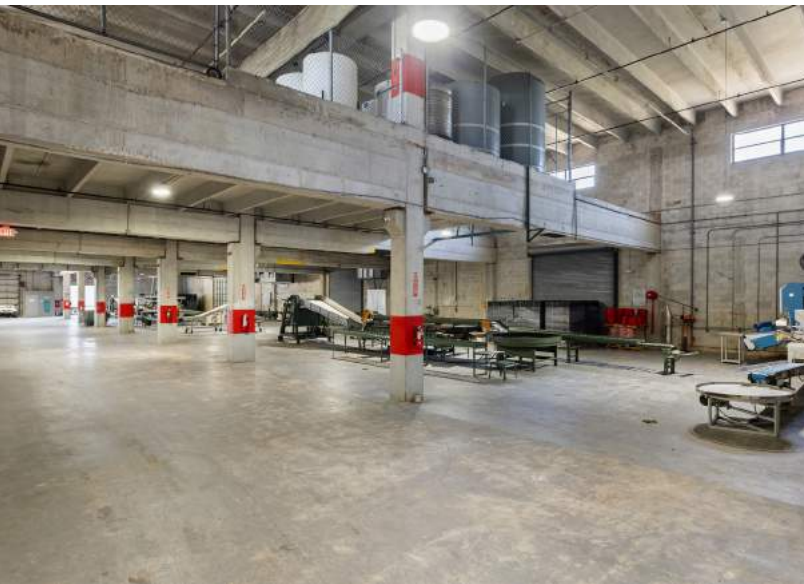
cspear@comreal.com
305-807-7662

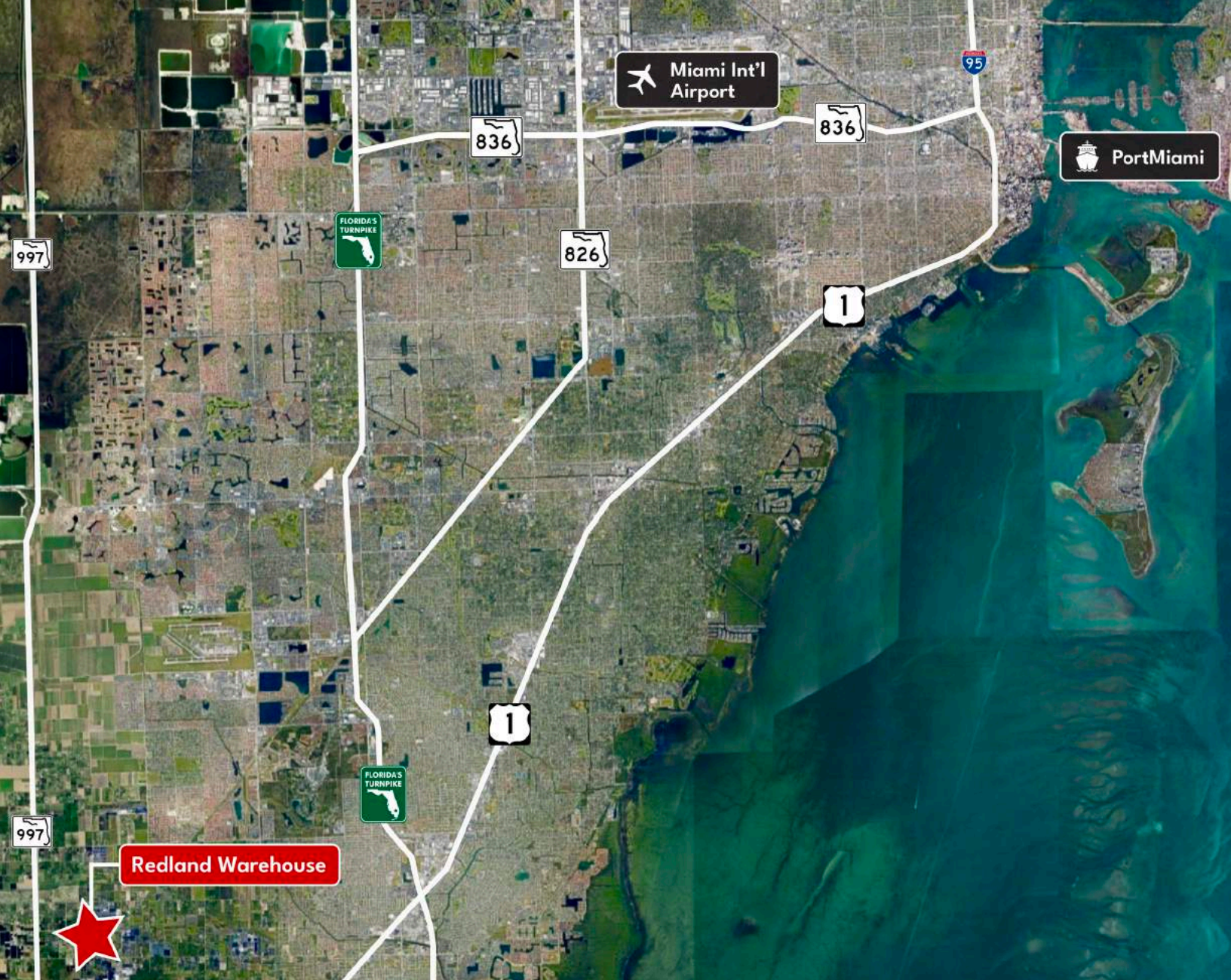


PROPERTY OVERVIEW

- +/- 55,600 Sq. Ft. Buildings
- +/- 4.36 Acre Lot
- +/- 23,600 Sq. Ft. Refrigerated Warehouse
- 13 dock positions
- 1 drive-in ramp
- Truck weight scale on site
- Heavy power
- Fully sprinklered
- **Zoning:** IU-1 Light Industrial / AU Agriculture District (unincorporated Miami Dade County)

PROPERTY PHOTOS





PROPERTY LOCATION

Nestled in the heart of the Redland Agricultural District of Miami-Dade County, this prime industrial property offers an ideal location for agriculture related businesses. Situated just 1 mile from Krome Avenue and 6 miles from the Florida Turnpike, it provides easy access to major transportation routes, strategically positioned between Homestead and Miami.

Edison Vasquez, SIOR, CCIM
evasquez@comreal.com
305-401-1085

Ed Redlich, SIOR
eredlich@comreal.com
305-710-5593

Chris Spear, SIOR, CCIM
cspear@comreal.com
305-807-7662

