



PROLOGIS GRATIGNY INDUSTRIAL PARK 12

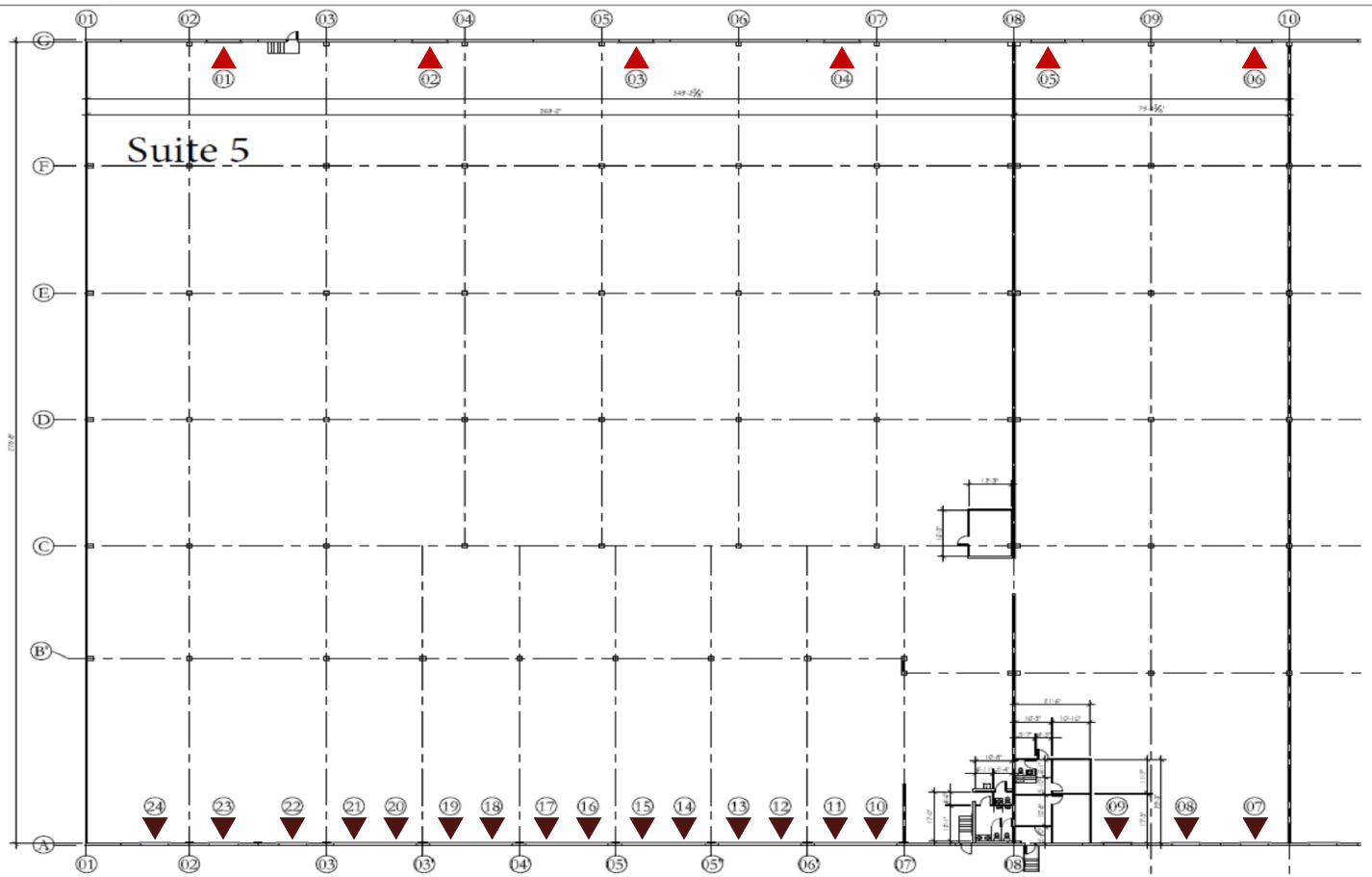
+/- 98,072 SF Warehouse // CSX Rail

Available for Sublease

Pat McBride, SIOR, Esq.

pmcbride@comreal.com

(305) 619-2937



- ▲ Rail Doors
- ▲ Dock Doors

PROPERTY HIGHLIGHTS

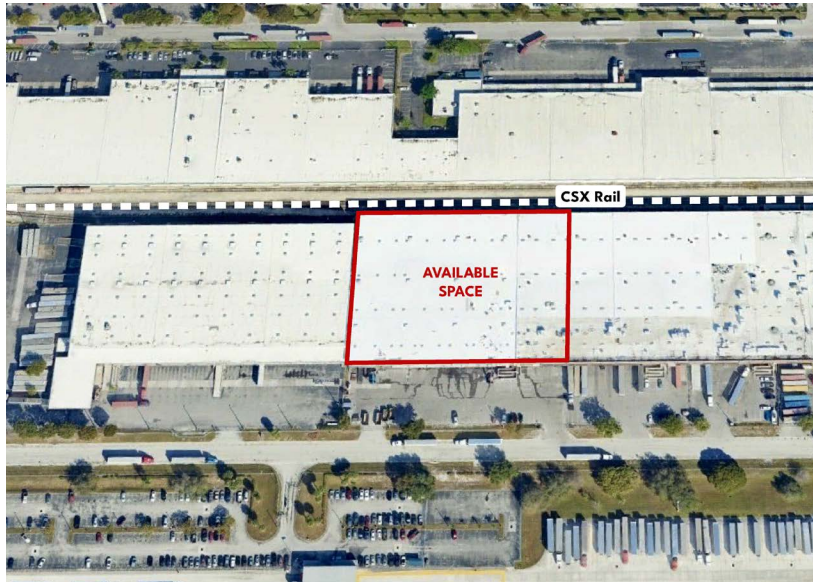
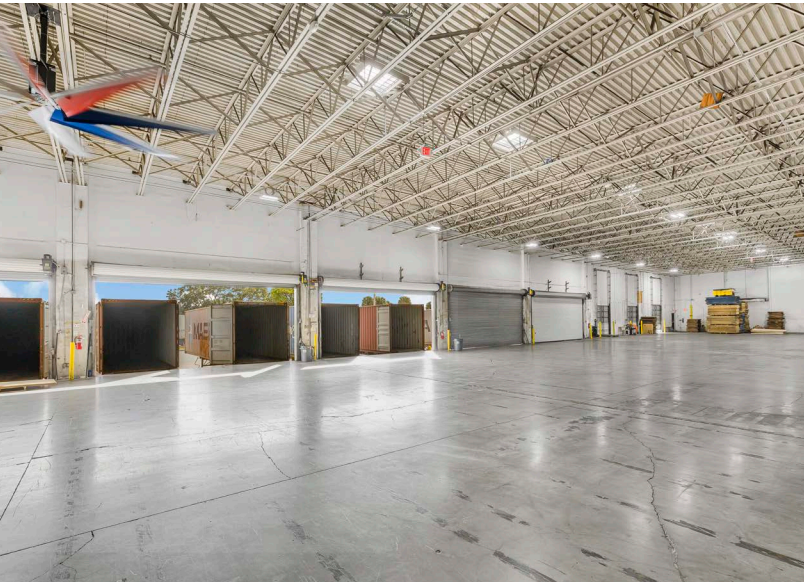
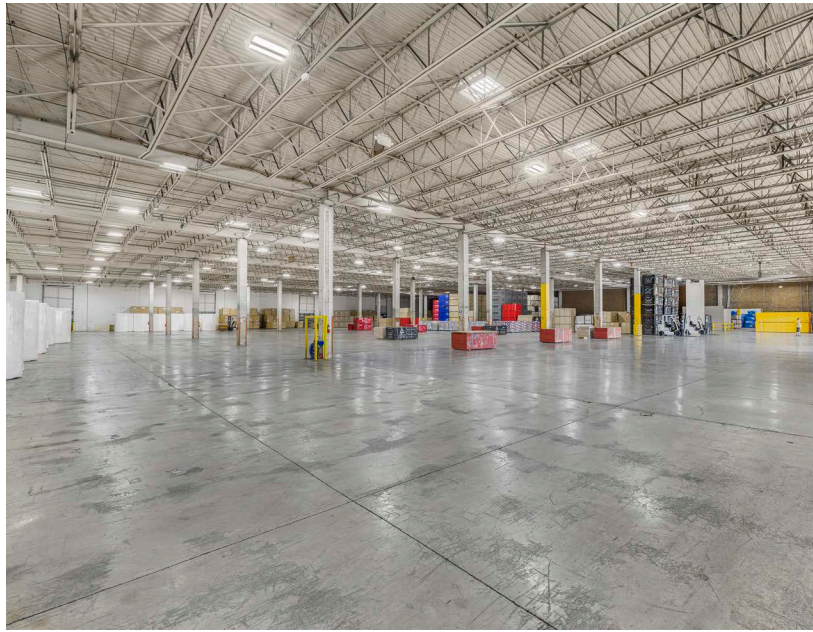
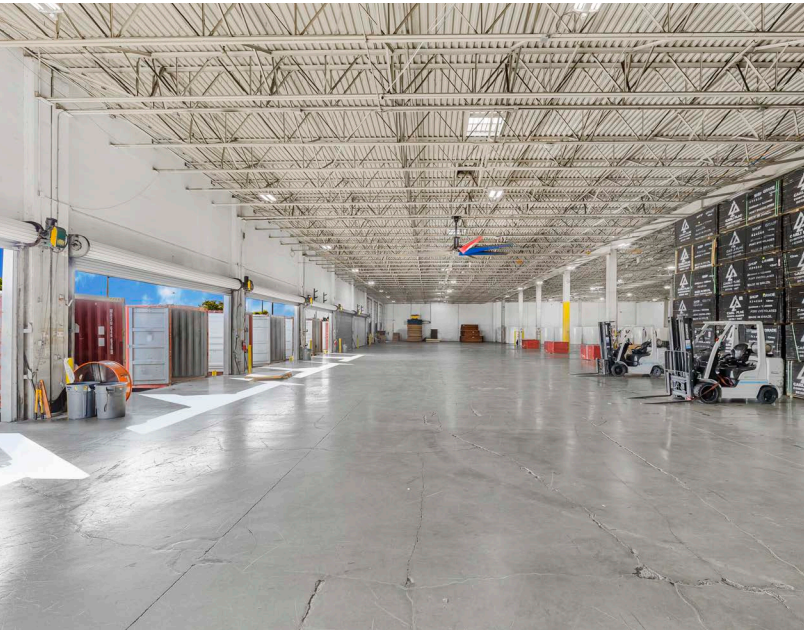
- +/- 98,072 SF Total
- +/- 1,500 SF of Office
- 18 dock positions
- 6 double wide loading doors
- 6 rail doors
- Typical bay: 44' x 40'
- 22' clear height
- Three phase power
- **Available: Immediately**
- **Sublease Rate: Inquire**

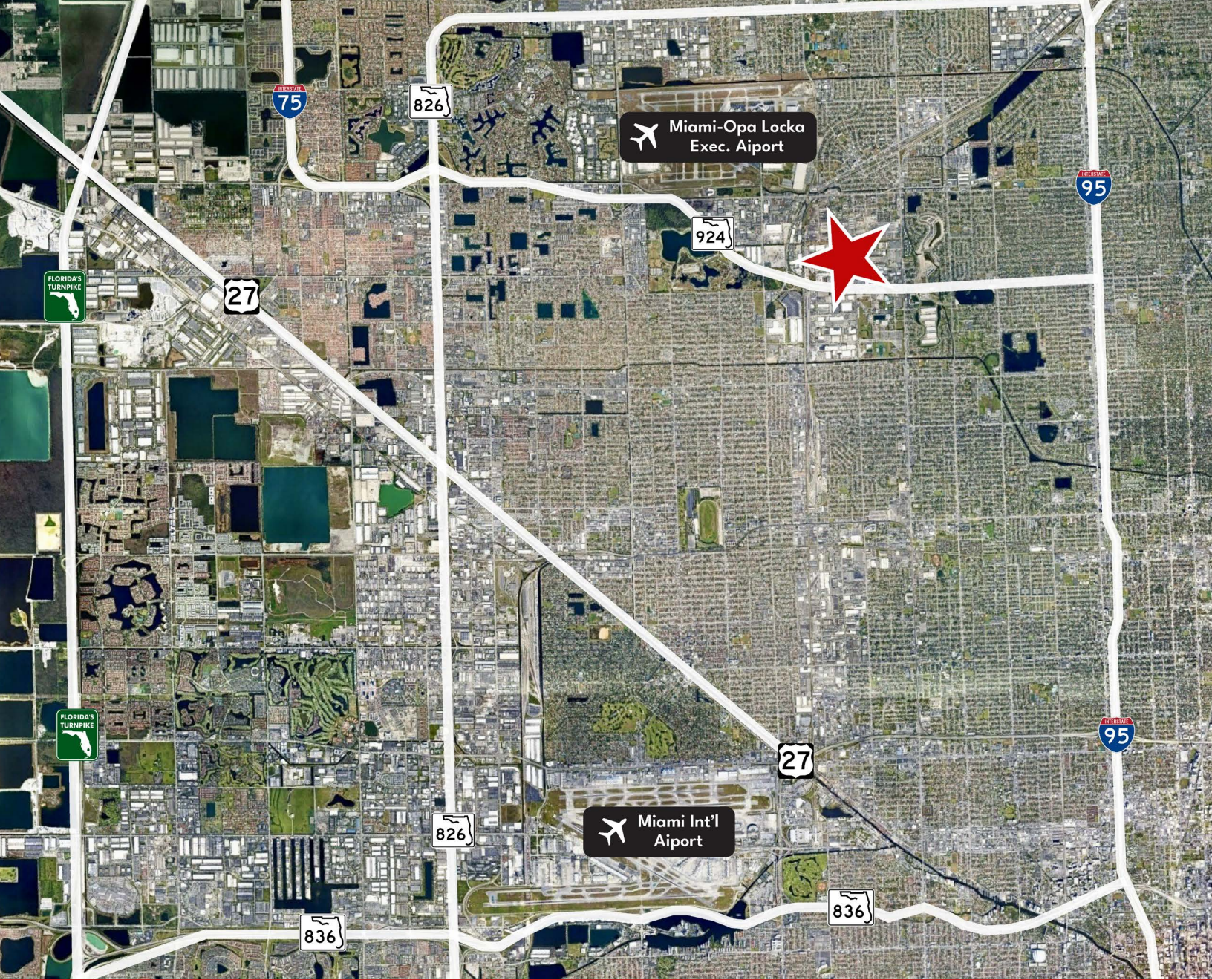
PROPERTY LOCATION

DISTANCE TO

- | | |
|-------------------|-----------|
| I-95: | 3 miles |
| 826: | 6.5 miles |
| Miami Airport: | 8 miles |
| Florida Turnpike: | 10 miles |
| Port Miami: | 11 miles |
| Port Everglades: | 20 miles |

PROPERTY PHOTOS





For Leasing Inquiries, Contact:

Pat McBride, SIOR, Esq.

pmcbride@comreal.com

(305) 619-2937

ComReal Miami - Doral, LLC

3470 NW 82nd Ave, Suite 605

Doral, FL 33122

ComReal[®]

MIAMI - DORAL, LLC

Disclosure: All information provided herein is obtained from sources that we believe to be reliable, but has not been verified for accuracy or completeness. Any reliance on this information is solely at your own risk. Terms and conditions or change in price are subject to change without notice.