

DEVELOPMENT SITE IN OPPORTUNITY ZONE

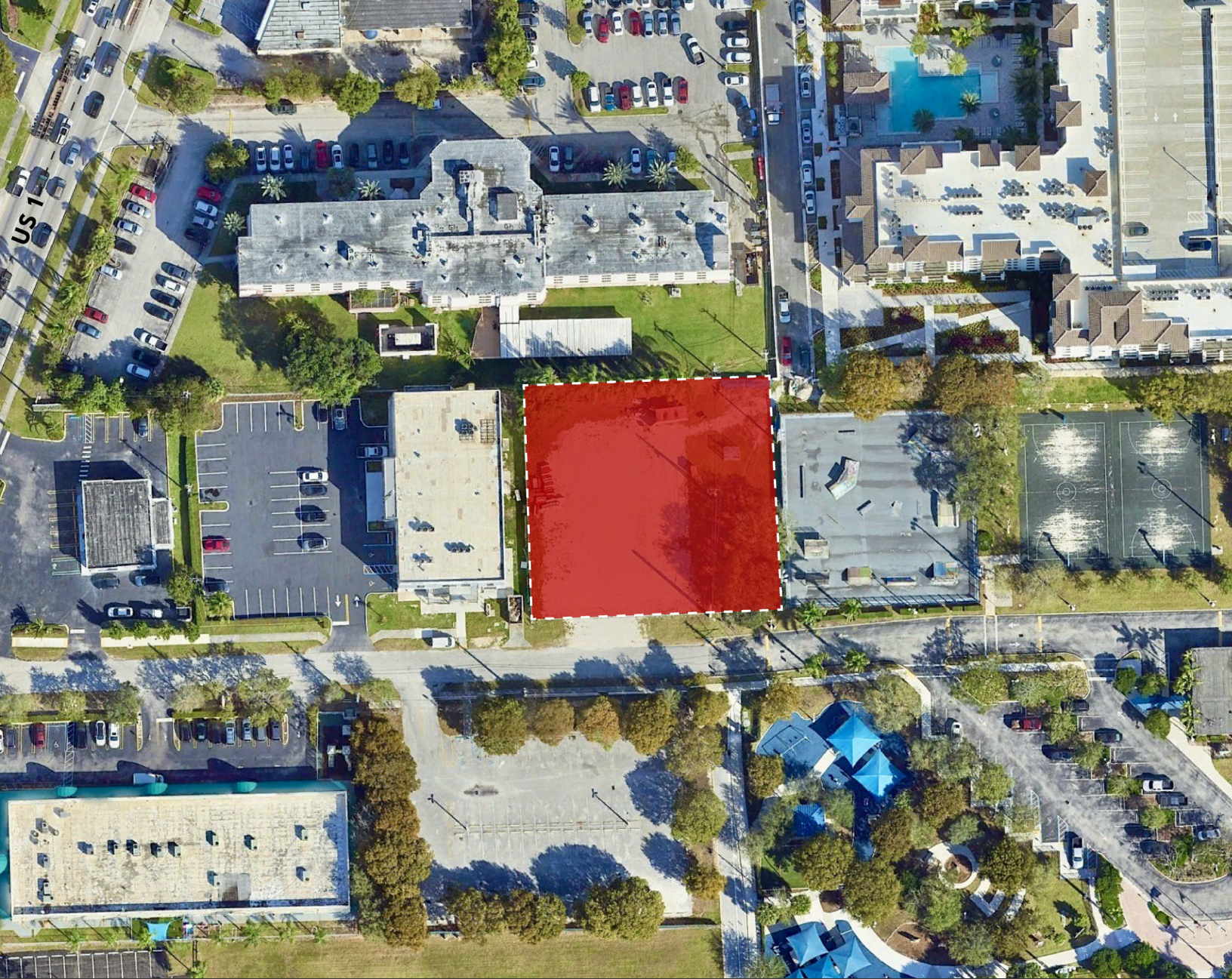
+/- 15,120 SF Total

Available for Sale

Edison Vasquez, SIOR, CCIM
evasquez@comreal.com
(305) 401-1085

Pat McBride, SIOR, Esq.
pmcbride@comreal.com
(305) 619-2937

Chris Spear, SIOR, CCIM
cspear@comreal.com
(305) 807-7662



PROPERTY OVERVIEW

- Total SF: 15,120 SF
- Folio: 33-5033-000-0590
- Zoning: DV - Downtown Village
- Cross Streets: SW 175 Terrace & US1
- Permitted Uses: Commercial, Retail, Office, Residential, Mixed Use, Entertainment

PROPERTY LOCATION

- Paved road frontage
- Utilities to site
- One block East of US1
- Liberal zoning (many uses)
- Adjacent to park
- In Opportunity Zone